



Highly Efficient &
Low Noise

Single Way or Two Way
Exhaust Fans

معیار اور جدت
ساتھ ساتھ

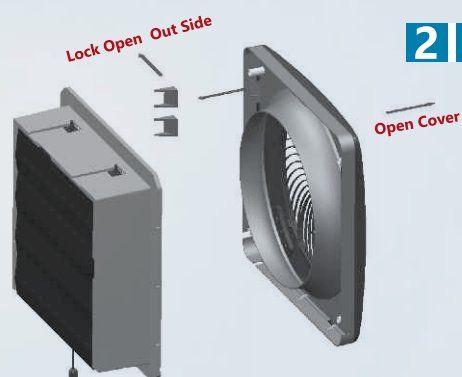
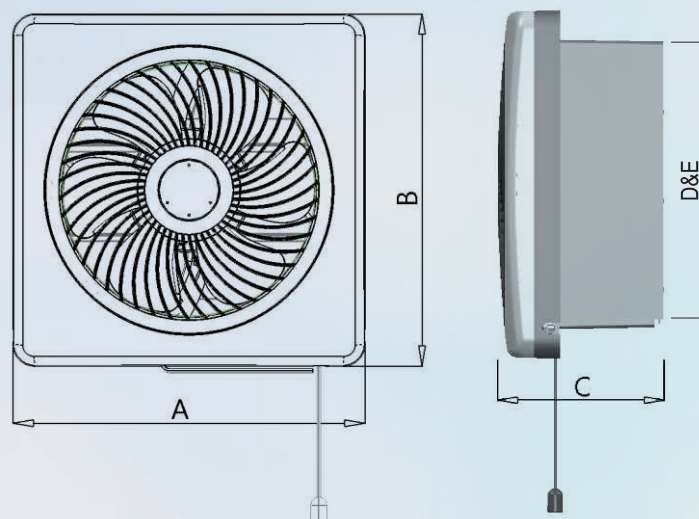
Features:

- ♦ Innovative Design With Pure Plastic Material.
- ♦ Energy Saving Exhaust Fan/ Easy To Install.
- ♦ 99.9% Pure Copper Winding.
- ♦ Double Action With Perfect Air Distribution.
- ♦ Low Price With High Quality.
- ♦ Reliable Motor Quality, Quiet & Efficient.
- ♦ Available with Different Sizes & Colors.



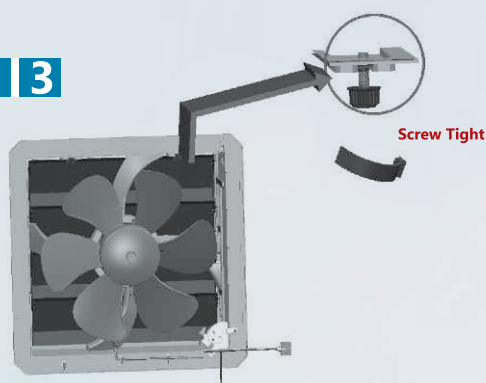
Installation Process

1 Check The Hole According To The Dimension D & E



2

3



4



Tight The Screw With The Wall According To Above Picture

5



Insert 2 Electric Wires Into The Power Input According To Above Picture(+) (-)

SPECIFICATION

Sweep Size	Input Power	Frame Dimensions					RPM	Rated Freaquency	Weight
		A	B	C	D	E			
8"	220-240 V	12"	12"	7"	9.7"	9.7"	1400	50H2	1.8Kg
10"	220-240 V	14"	14"	7"	11.6	11.6	1400	50H2	2.18Kg
12"	220-240 V	16"	16"	7"	13.5	13.5	1400	50H2	2.54Kg